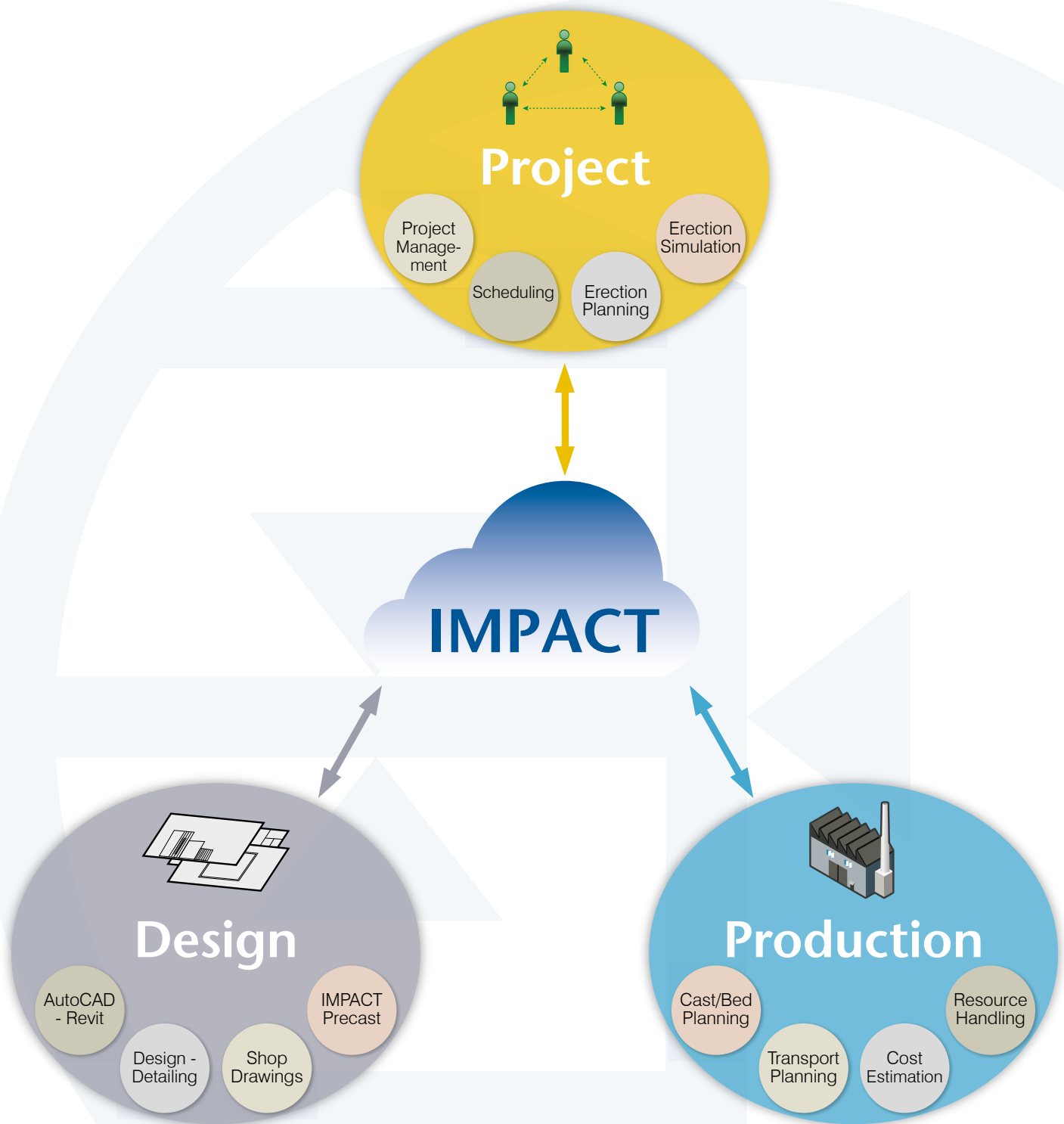




# IMPACT



# StruSoft

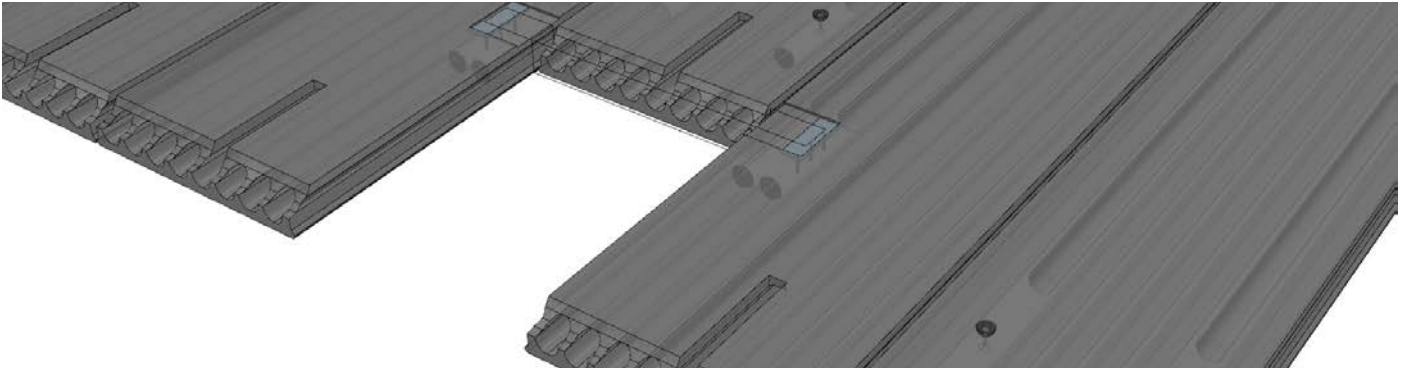


**IMPACT** is a family of **BIM** software that provides the necessary tools for the precast concrete industry to efficiently manage, design, produce, transport and erect prefabricated elements.

**IMPACT** is comprised by three main areas: **Project, Design and Production**. These areas communicate through the same open database where the Building Information Model is stored and is available to be accessed in real time by all stakeholders. Any changes from one area are reflected immediately to the others resulting in increased efficiency, accuracy and productivity, while reducing costs, avoiding conflicts and saving time.



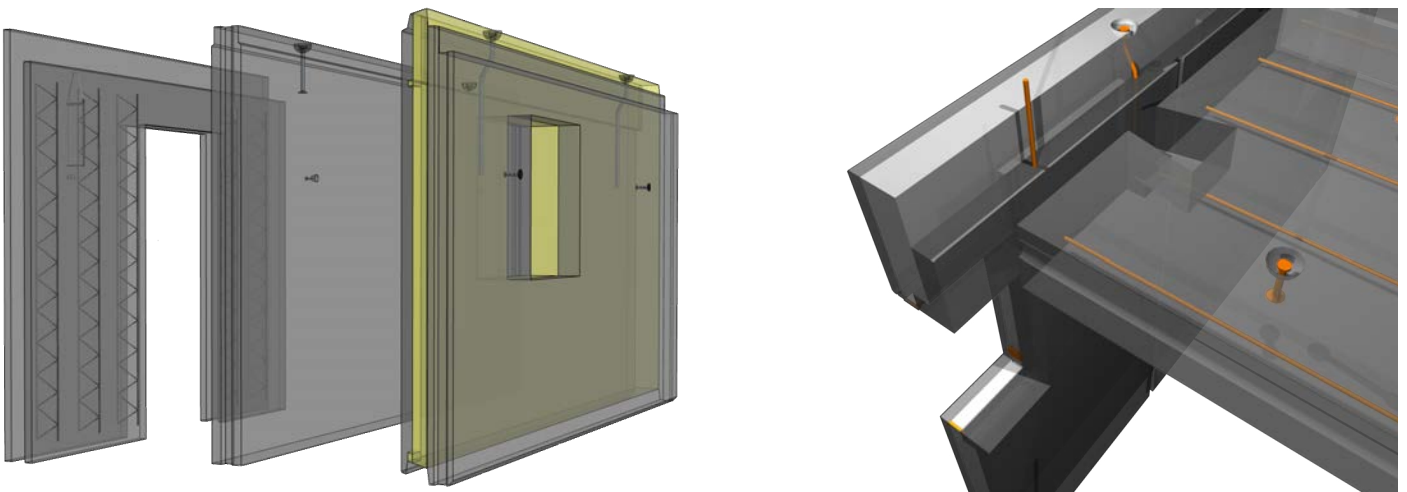
# IMPACT



**IMPACT Design** offers designers and consultants the ability to create the Building Information Model using 3D elements, with information and characteristics from the actual building elements produced by the precast factories.

## Design Benefits

- ✓ IMPACT has a **fast learning curve** and delivers **immediate results** since it works within AutoCAD and Revit, while enhancing their functionality for precast concrete elements. Additionally it allows for **bidirectional communication** with other software such as Tekla.
- ✓ IMPACT offers **high quality** floor plans, shop drawings, assembly drawings and reports that are easily and automatically generated.
- ✓ Working in a 3D environment is **true to life**, helping designers to work more accurately, efficient and save time by avoiding and correcting conflicts faster.
- ✓ Continuously checking the model according to crane, mass, size and production capacities, contributes to the **overall efficiency** of the project operations.
- ✓ IMPACT component library utilizes a large number of specialist tools for **maximizing model accuracy** and is expandable in order to model any type of precast element in 3D.
- ✓ Any changes made to the model or to various elements, are saved to the database, where they are instantly available to the other members of the project. This helps with **avoiding design conflicts** and files being outdated.



SW409: 1919

SW410: 1920

SW411: 1921

SW412: 1922

SW413: 1923

SW414: 1924

SW415: 1925

SW416: 1926

SW417: 1927

SW418: 1928

SW419: 1929

Properties

Name

Value

General

Element Mark

HC112

Element Id

1902

Group

Element Type

Hollow Core

Definition

19

Product

HC19

Lot

Strandpattern

4

Quantity

15

Frozen

No

Cast Planning

Erection Planning

Simulate

Transport Planning

Table

	Element Mark	Id	Length (mm)	Width (mm)	Height (mm)	Area (m²)	Mass (t)	Ready for Production	Ready for production date	Producing Factory	Division	Production date	Delivery date	Erection Seq. No	Transport No	Stack No	Cast No	Planned drawing date	Planned production date	Planned storage date	Planned delivery date	Planned erection date	Status		
	HC111	2576	1200	185	5,56	1,54		X	120615					X	0	0	0	✓	100020					0	
	HC111	2652	1200	185	5,56	1,54		X	120615			120306	120902	X	0	0	0	✓	100020			120319	120425	120504	0
	HC111	2801	1200	185	5,56	1,54		X	120615			120306		X	0	33	33	✓	100021			120319	120425	120504	0
	HC112	1416	1200	185	5,56	1,54		✓	120615	<External>		120403		✓	70	1	1	✓	100017					120510	0
	HC112	1568	1200	185	5,56	1,54		X	120615	<External>		120403		✓	151	127	127	✓	100004				120425	120525	20
	HC112	1835	1200	185	5,56	1,54		X	120615					X	0	0	0	✓	100004						0

**IMPACT Project** offers project managers the ability to overview, support and manage all operations of a building project, from initial idea through to design, production, transportation and erection of the elements.

## Project Benefits

- ✓ IMPACT Project offers a **complete insight** of the project in 3D, while including summaries and reports for all elements.
- ✓ IMPACT **streamlines the workflow** by incorporating plans and time schedules into the drafting process.
- ✓ Scheduling of design, production, transportation and erection, with element status, allows for **complete control** of the progress and **easy tracking** of each individual element.
- ✓ The simulation function illustrates the erection sequence of the elements from start to finish, providing **better scheduling and understanding** of the actual erection progress.
- ✓ IMPACT helps to create rough estimations of delivery and cast dates to make sure that the **project is on track** from the start.



# PROJECT



**IMPACT Production** is highly customizable to the needs of any precast factory, offering the ability to plan precast elements with accuracy down to individual cast units and giving managers full control of all resources in their factory.

## Production Benefits

- ✓ IMPACT provides a great **overview of all projects** by having the ability to reserve space in the factory schedule, keep tabs on cast units and staffing capacity, follow up on production, manage storage, take care of issues and rejected elements.
- ✓ Cast designs are taken directly from the 3D model resulting in **accurate and precise casts**. The process becomes simpler and with fewer steps, since design and production have access to the same model.
- ✓ Quantities of cast-in materials, reinforcement and holes are provided in a separate report. Bill of Material (BOM) lists are automatically generated and updated according to production designs, hence **avoiding outdated and conflicted lists**.
- ✓ Advanced cost and resource management tools give a **holistic view** and increased control over the project.
- ✓ IMPACT also supports a number of export formats to **production planning systems (ERP)** and production automation systems including Unitechnik, BETSY, ELIPLAN and BVBS, as well as customer specific exports.

## Mobile

IMPACT brings the ability to gain access to the BIM model from everywhere with the convenience of mobile phone applications.

- ▶ Track element status with detailed information.
- ▶ Ability to scan QR codes to update the BIM database about element status.



Impact Mobile			Impact Mobile		
SELECTION		HISTORY	PROJECT NAME 136617		
6 ELEMENTS			GENERAL		
P022	Not Approved for Production	10	ELEMENT MARK	P022	
Element ID: 1248			ELEMENT ID	1248	
P023	Not Approved for Production	10	GROUP	RP 50/60	
Element ID: 1249			ELEMENT TYPE	Column	
P024	Not Approved for Production	10	DEFINITION	RP 50_60	
Element ID: 1250			PRODUCT	RP	
P025	On Waybill	60	LIFT	0161	
Element ID: 1254					
P003	On Waybill	60			
Element ID: 1255					
P026	Scheduled	30			
Element ID: 1256					

# PRODUCTION



# IMPACT

StruSoft is an innovative Swedish software company with more than 35 years of experience in specialized software applications for analysis, design, modelling and energy for the building industry.



## FEM-Design

Finite element software for analysis and design of load-bearing concrete, steel and timber structures.



## WIN-Statik

A suite of easy to use applications for common design tasks such as beams, columns or frames.



## PRE-Stress

Analysis and design software for complete product life calculations of prestressed beams.



## IMPACT

A family of BIM software to efficiently manage, design, produce, transport and erect prefabricated concrete elements.



## VIP-Energy

Fast energy balance analysis for buildings using a dynamic calculation engine.



## SyncroSite

[www.syncrosite.com](http://www.syncrosite.com)

A cloud-based system developed to support production management at construction sites.



## BIMcontact

[www.bimcontact.com](http://www.bimcontact.com)

Web-based project collaboration and document management system for the building industry.

Villa Suprême, the head office in Malmö, Sweden  
Cover photo: Malmö Live by Pia Hansson

# StruSoft

[www.strusoft.com/impact](http://www.strusoft.com/impact)

September 2015