

The background of the entire page is a photograph of a construction site. In the foreground, there's a grid of steel reinforcement bars (rebar) laid out on a construction surface. A worker wearing a yellow hard hat and safety gear is visible, working on the rebar. In the background, there are tall, vertical structures made of rebar, possibly for a bridge or a large building. The sky is clear and blue.

StruSoft



**IMPACT
Reinforcement**

2022

IMPACT Reinforcement is an effective software application for generating intelligent reinforcement drawings and schedules. Integrated into BriscAD and AutoCAD®, the software offers an easy and intuitive way of defining complex reinforcement for concrete structures. Templates can be used to ensure that detailing is presented according to national practice, or users own preferences.



Reinforcement Detailing Software

The Reinforcement detailing software module in IMPACT provides the tools you need to generate intelligent steel reinforcement models, drawings, and schedules. It is a plug-in application for AutoCAD and BricsCAD that provides an easy and intuitive way of defining complex reinforcement for both in-situ (RC) and precast concrete structures.

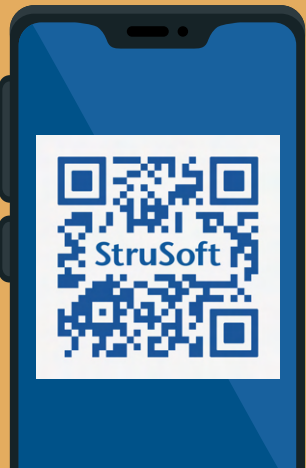
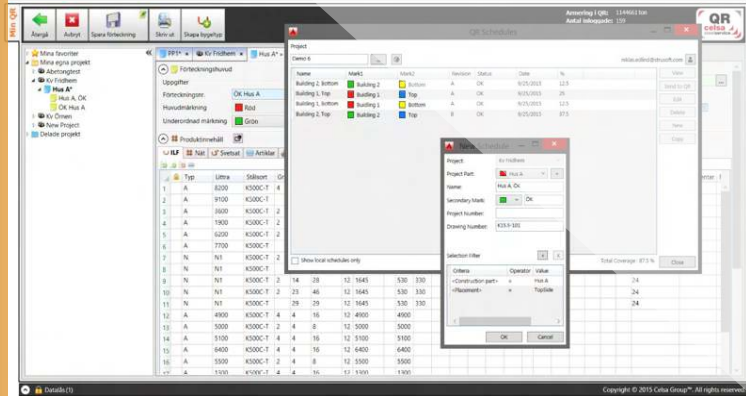
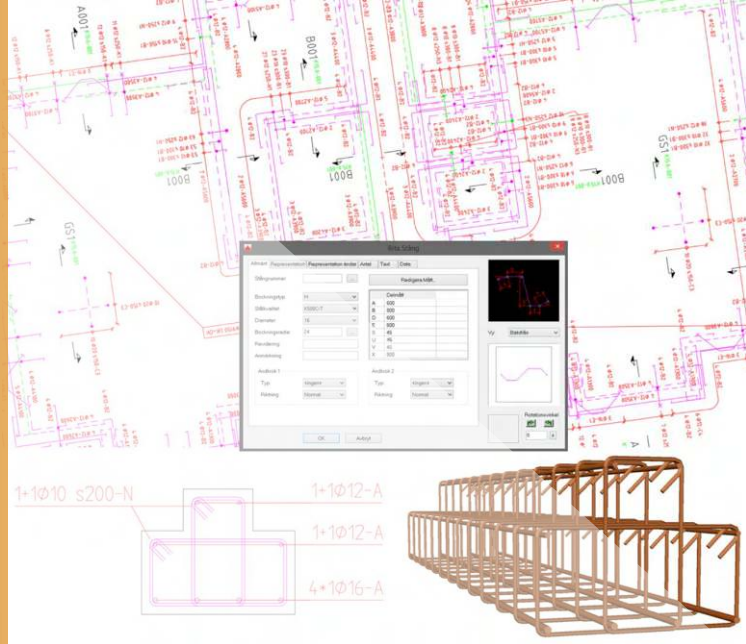
IMPACT Reinforcement lets you model and schedule rebar. Used in conjunction with any of the IMPACT Design modules, it opens automatic reinforcement templates, groups, and schedules. It even creates export to machine-readable files (Unitechnik, BVBS, PXML, and more).

Speed up your detailing

The smart objects in IMPACT Reinforcement contain all necessary information to quickly draft your rebar. Define rebar includes bar mark, shape code, leg lengths, end hooks, and material. Depending on view direction and bar settings, the bars are shown as reading symbolic representations according to standard but can also be displayed as 3D solids.

Save time with automated scheduling

Tailored to fit your company



FOR MORE INFORMATION

CONTACT INFO:



www.strusoft.com



+45 26293068



IMPACT Reinforcement