



## SHORT INSTALLATION INSTRUCTIONS

Check what's new in  
SOFTPLAN



[www.planeo-software.com](http://www.planeo-software.com)



## Introduction

This document contains the description of installation for Softplan 11. Before installing Softplan, appropriate BricsCAD platform must be properly installed and licensed on the computer, since Softplan is not a standalone application, and it needs the platform to function. Of course, appropriate operating system must be professionally installed as well (Windows).

The user should run BricsCAD application at least once before installing Softplan. Otherwise, the program will not be able to run properly.

Recommended operating systems are Windows 10 and Windows 11. Support for particular operating system is related with the version of the BricsCAD platform that you use. From version V21 on, following operating systems are supported: Windows 7 SP1, 8, 8.1, 10 i 11, 64-bit versions only.

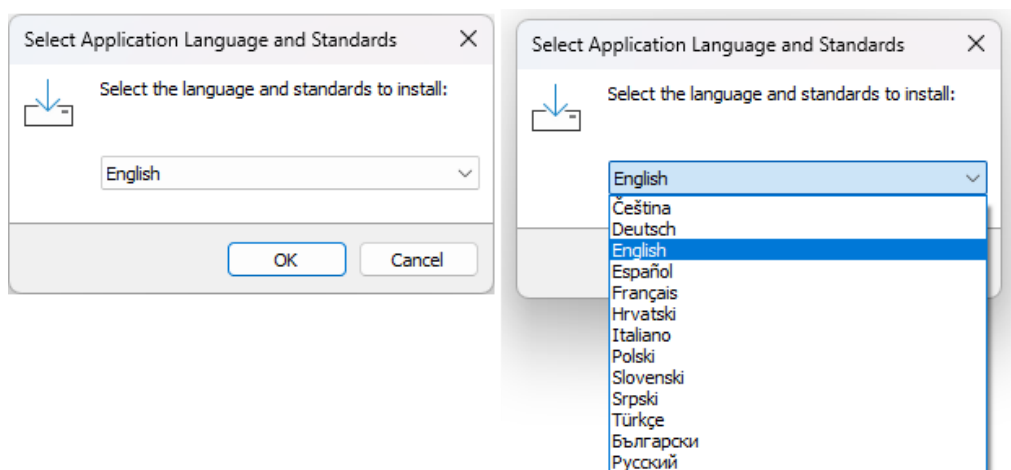
## Supported BricsCAD versions

Softplan 11 supports following BricsCAD versions:

- BricsCAD V23
- BricsCAD V22
- BricsCAD V21

## Installation procedure

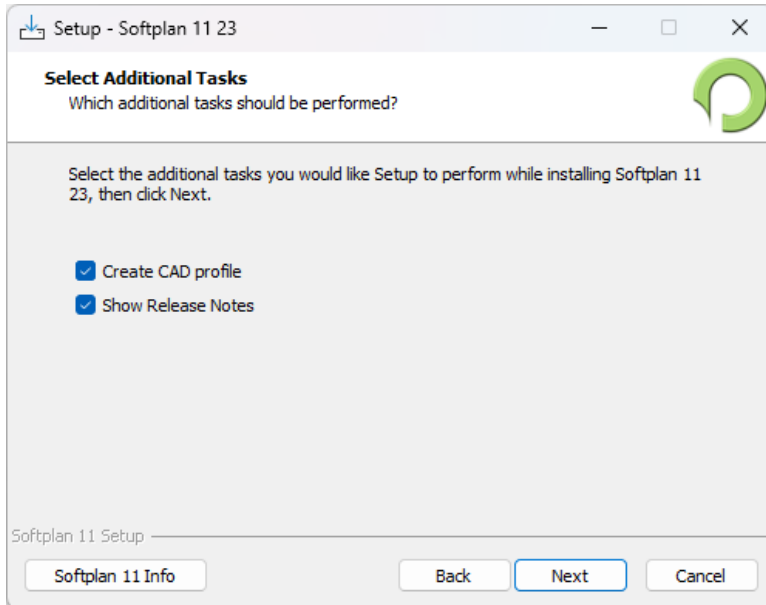
1. Run BricsCAD at least once before you start to install Softplan
2. Run the installation "AS ADMINISTRATOR"
3. Program will ask you to select language – it is the language of the program, so please select the one that you want to see inside the program:



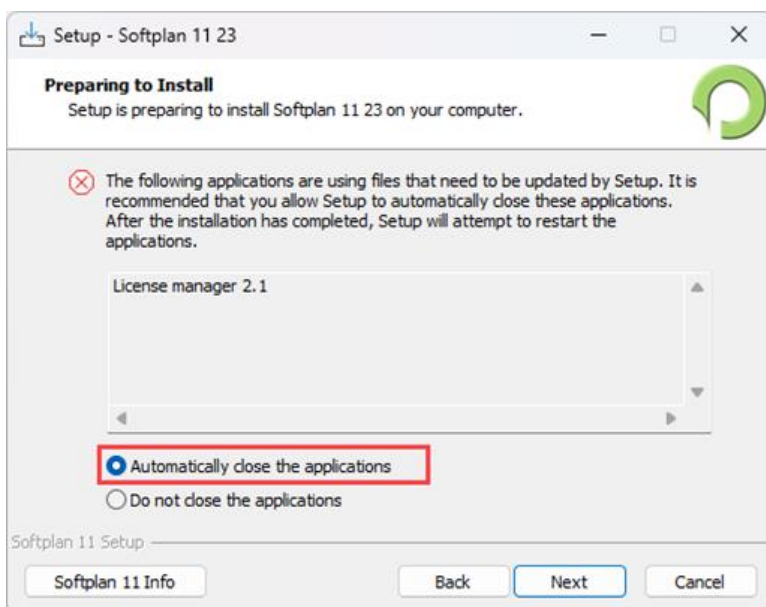
4. Start the installation – click NEXT >
5. Read Terms and conditions statement and accept them to continue with the installation process; click NEXT >
6. Read License agreement and accept it to continue with the installation process; click NEXT >



7. Program will show name and location of the installation folder - you can change it if you like, but it is not necessary. Click NEXT >
8. When it comes to this part, include the options as on picture and click NEXT:

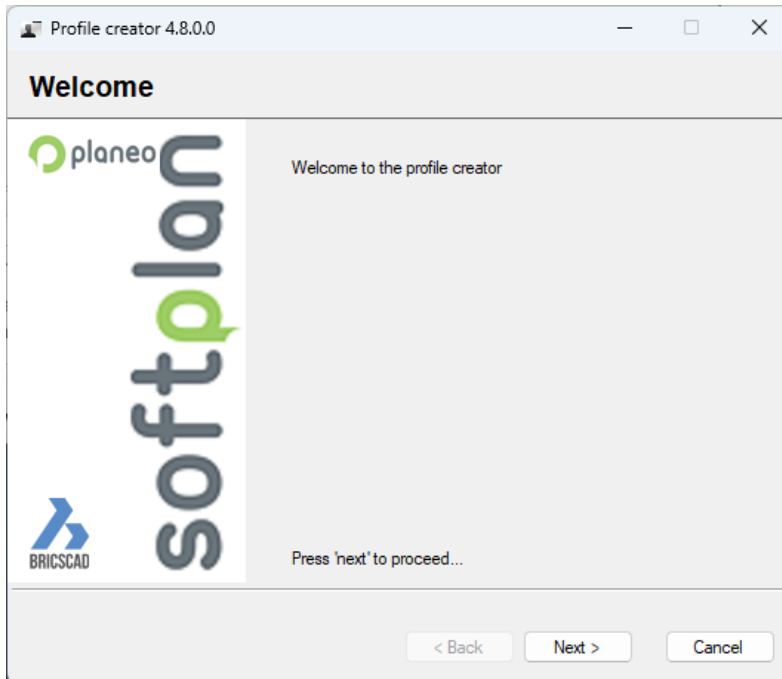


9. Wait for the installation procedure to finish. If this window appears, select the option as on picture and click NEXT:

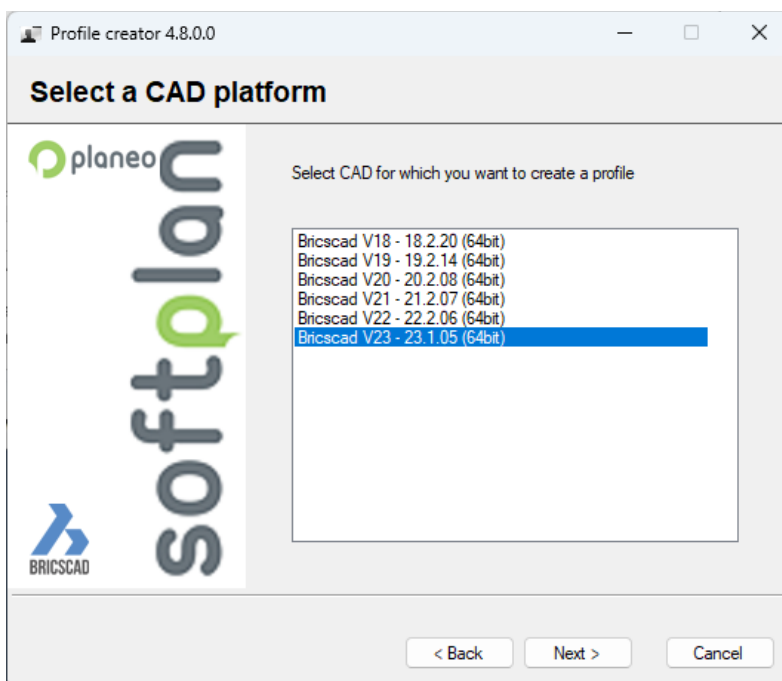




10. After the installation, Profile Creator will pop up – it helps you to create a profile of Softplan within BricsCAD and create shortcut:

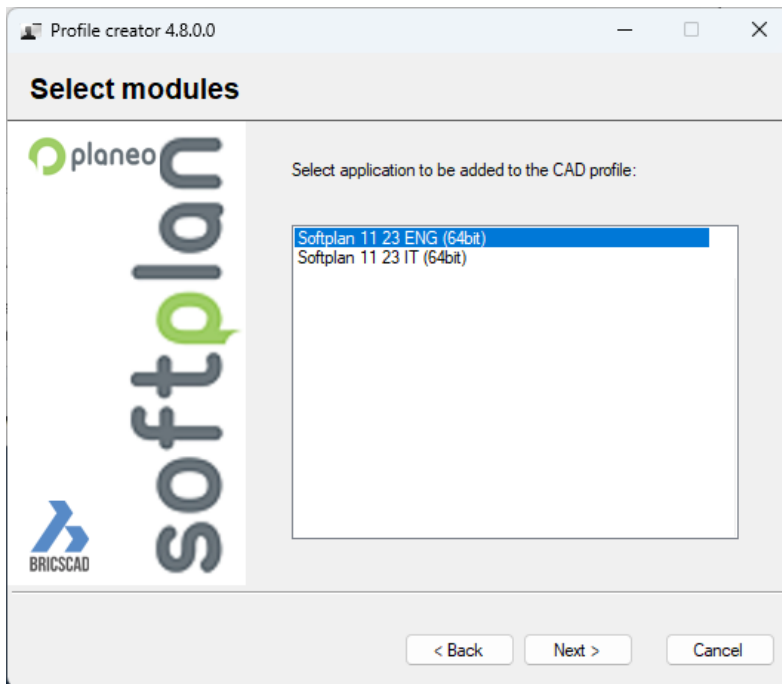


11. Click NEXT > and select BricsCAD product version on which you wish to install Softplan on, click NEXT > again:

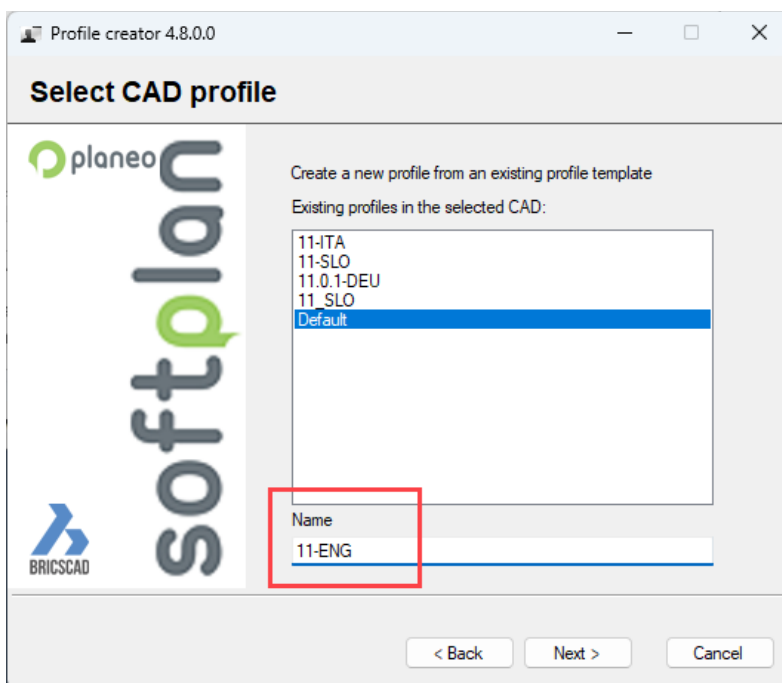




12. Select appropriate Softplan version:

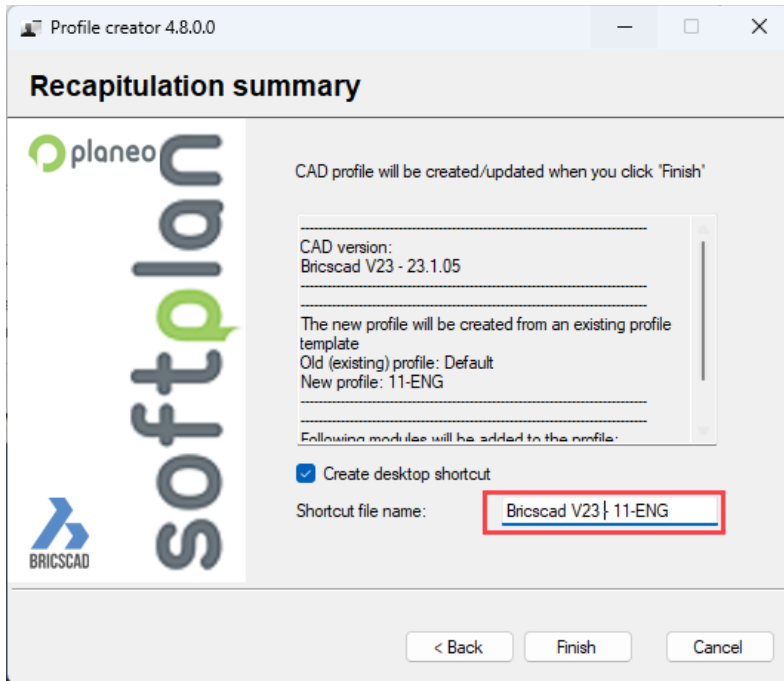


13. Select default profile Default, and type Softplan profile name - program will create new profile for Softplan based on the default profile, and this way you will get special Softplan shortcut on your Desktop:





14. Click NEXT >. Select the option "Create desktop shortcut".



15. Shortcut for Softplan profile on BricsCAD will be created on your Desktop, and it will be shown with Softplan icon:

