



AUTOMATIC ONLINE ACTIVATION

Check what's new in
SOFTPLAN

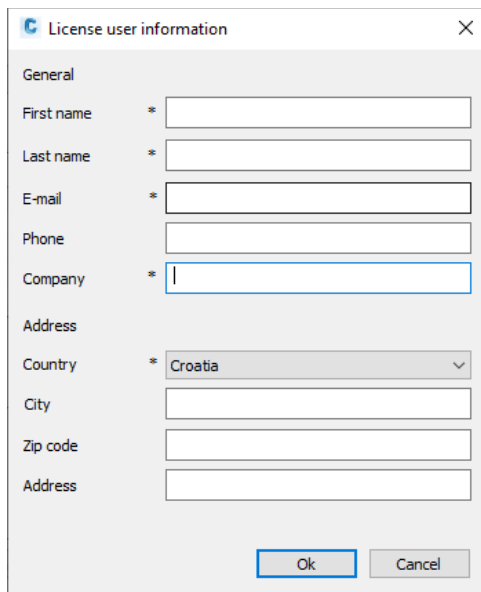


www.planeo-software.com



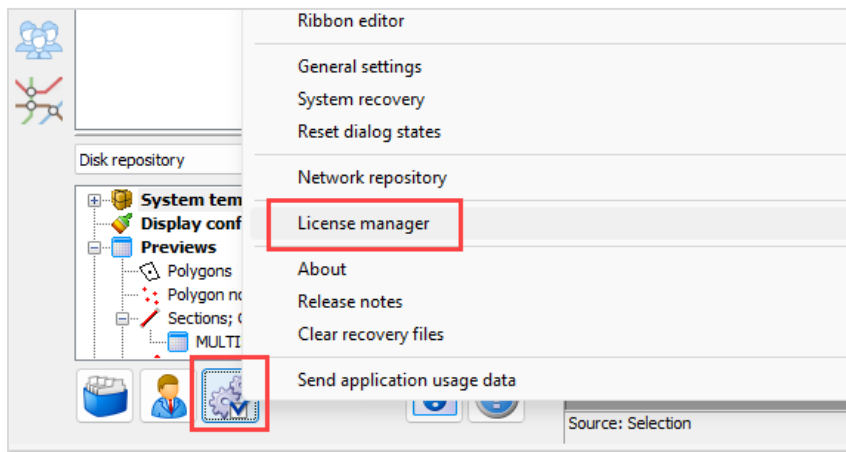
How to activate Softplan automatically over the Internet

1. To activate Softplan automatically, over the Internet, install it as described in [Short installation instructions](#), then run it with special shortcut that appears on Desktop:
2. Softplan will be loaded inside of BricsCAD. Workspace (main window) will appear on the left, table on the bottom of the screen, and Ribbons on the top.
3. It is possible that following window will appear, where the user must enter the data marked with asterisk sign (*) – without this data, activation will not be possible:



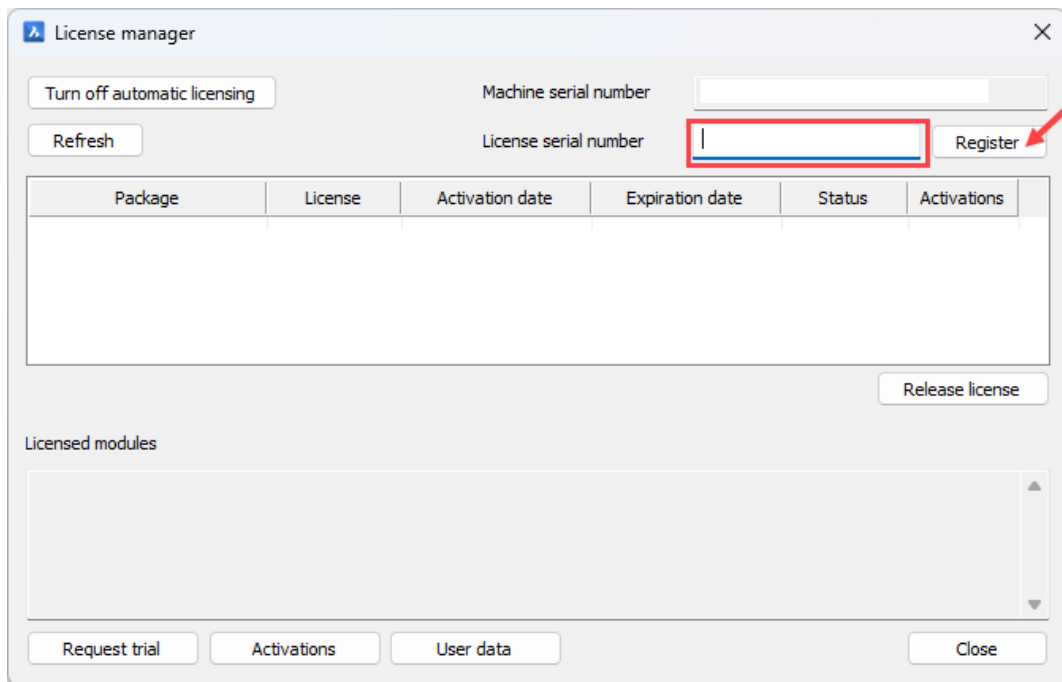
The image shows a dialog box titled "License user information" with a close button (X) in the top right corner. It contains several input fields under the "General" section. The fields are: "First name" (marked with *), "Last name" (marked with *), "E-mail" (marked with *), "Phone", "Company" (marked with *), "Country" (a dropdown menu currently showing "Croatia" and marked with *), "City", "Zip code", and "Address". At the bottom of the dialog are "Ok" and "Cancel" buttons.

4. To activate the software, run [Wheels button](#) to reach [License Manager](#):

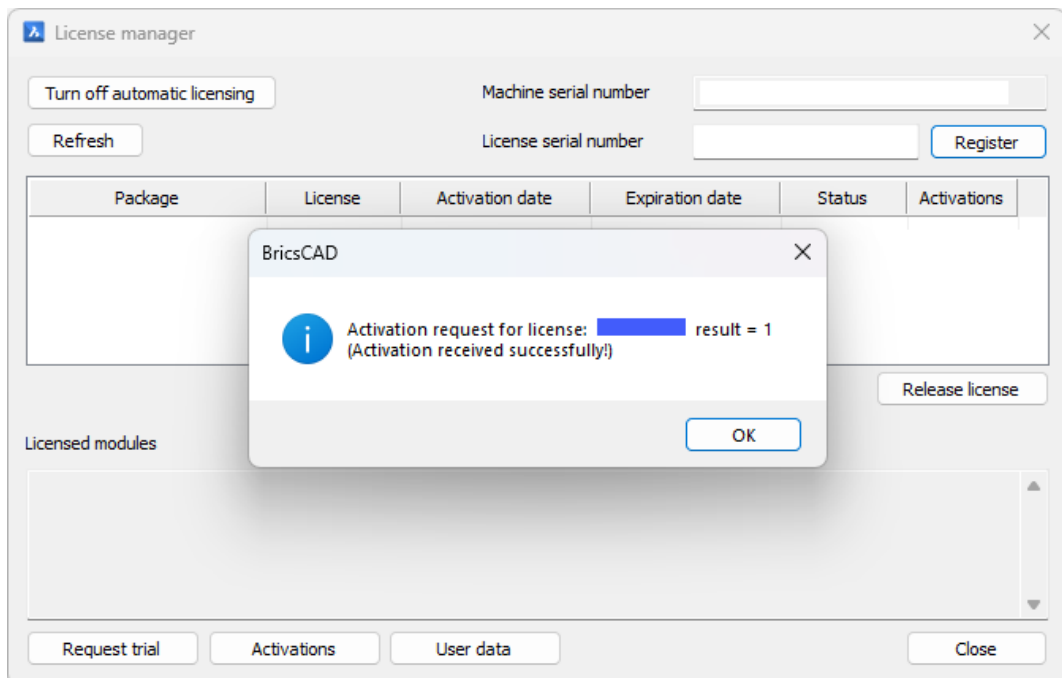




5. This window will appear – enter LSN number into this “License serial number” box, then click on the REGISTER button:

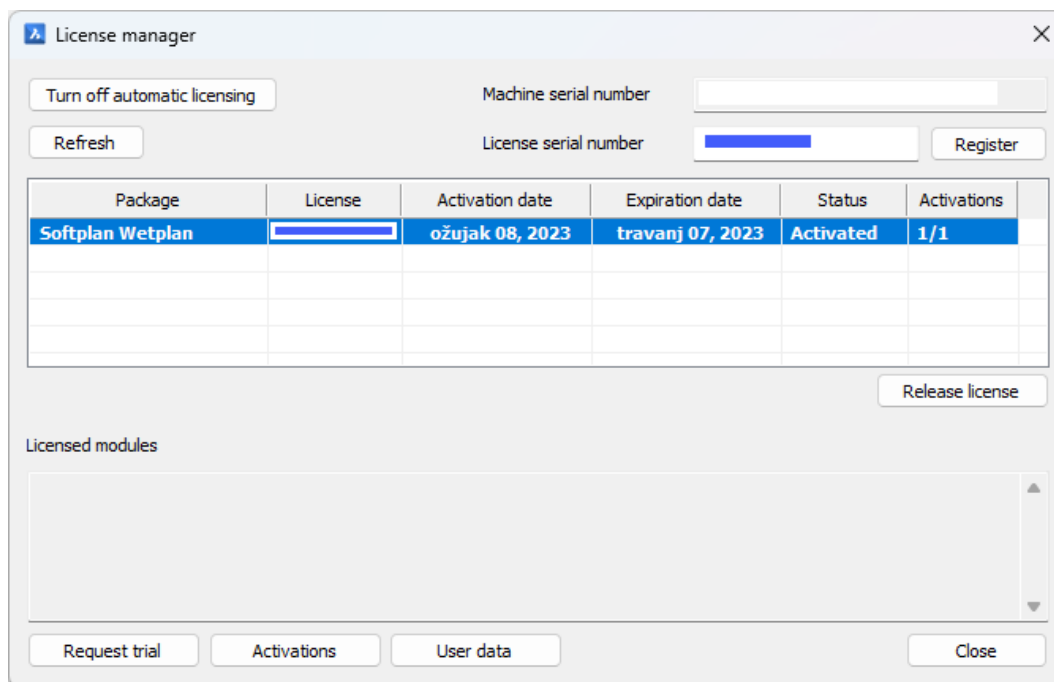


6. Wait until the license activates over the Internet. After few moments, program will show the message whether the activation was successful:





License information will appear in the same window – software version, package, activation and expiration date and number of used / available activations:



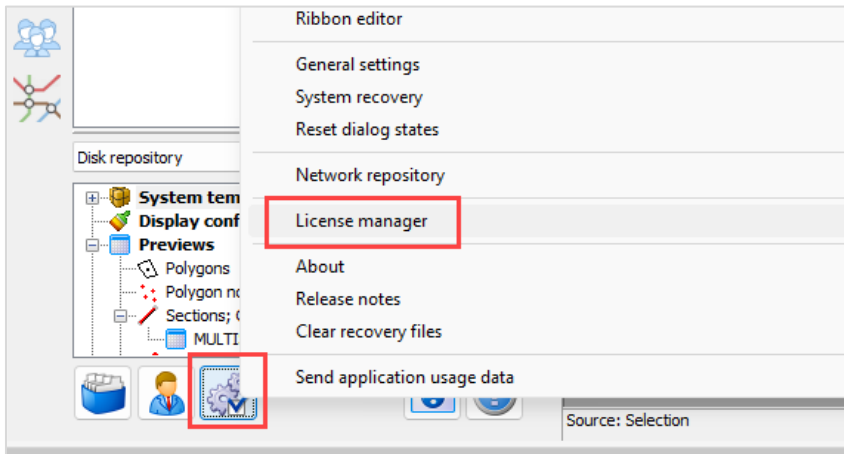
- Restart Softplan. After restart, Workspace will be active, and you will be able to use the commands.



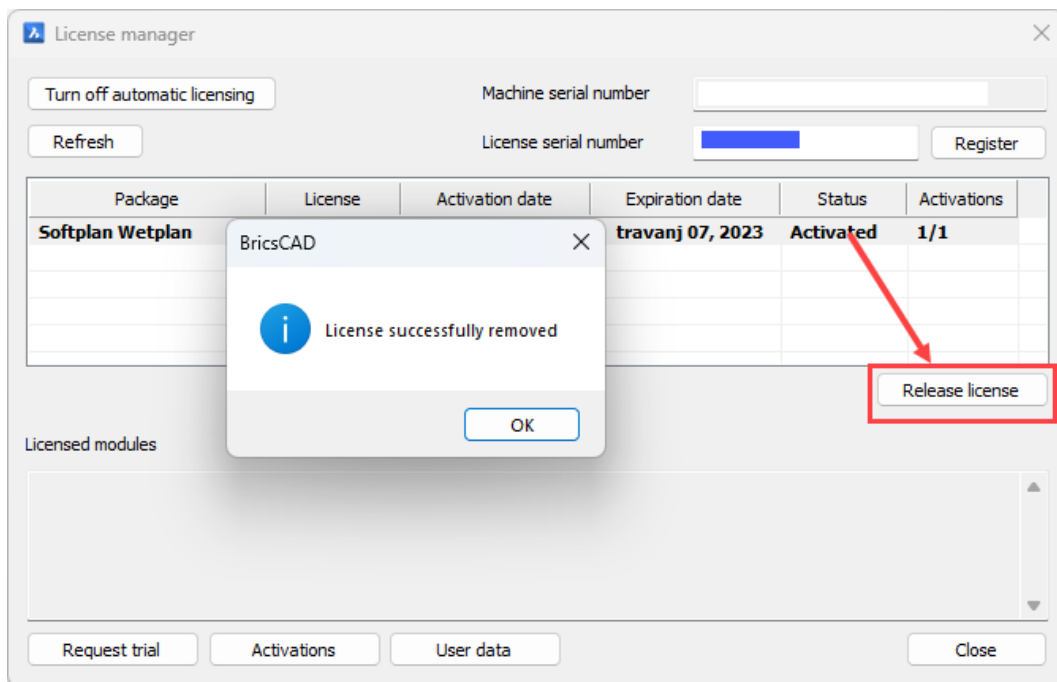
How to use LSN with multiple computers

If it is necessary for multiple users to use the software (but not at the same time), it is possible to de-activate the software on one computer and activate it on another. The user that activated the software must release LSN, so that the other would be able to use it.

1. To release the LSN, run wheels button to reach License Manager again:



2. Select the license and click button RELEASE LICENSE:



License will be de-activated, so another user will be able to activate it on their computer.

Number of activations and releases is unlimited, which means that it is possible to activate and release the license at any moment, on any computer, multiple times a day. It is necessary only to agree with the colleagues about it.